



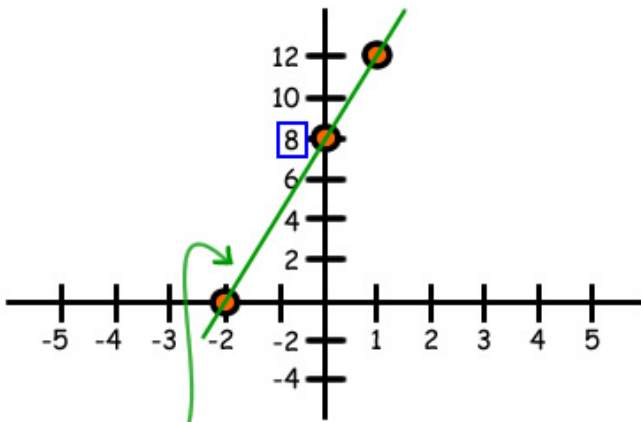
Questions?
Ask a live tutor now!

Ask Question ▶

Problem 1 of 6

Find the y intercept of the line
 $y = 4x + 8$.

Question



Answer

$$y = 4x + 8$$

$$y = 4(0) + 8$$

$$y = 0 + 8$$

$$y = 8$$

y-intercept is (0, 8)

4. Linear functions

[Intercepts](#)[Slope](#)[Direct proportion](#)[Forms of the line equation](#)[Slope equation](#)[Parallel equations](#)[Perpendicular equations](#)[Transformations](#)[Table of Contents](#)

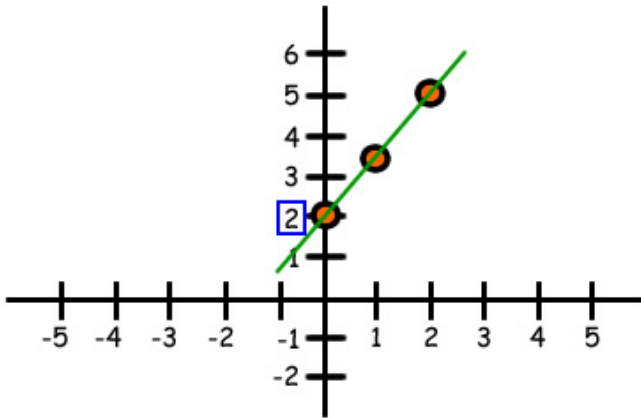


Questions?
Ask a live tutor now!

Ask Question ▶

Find the y intercept of the line
 $2y - 3x = 4$.

Question



Answer

$$2y - 3x = 4$$

$$2y - 3(0) = 4$$

$$2y - 0 = 4$$

$$2y = 4$$

$$\frac{2y}{2} = \frac{4}{2}$$

$$y = 2$$

y-intercept is (0, 2)

4. Linear functions

[Intercepts](#)

[Slope](#)

[Direct proportion](#)

[Forms of the line equation](#)

[Slope equation](#)

[Parallel equations](#)

[Perpendicular equations](#)

[Transformations](#)

[Table of Contents](#)

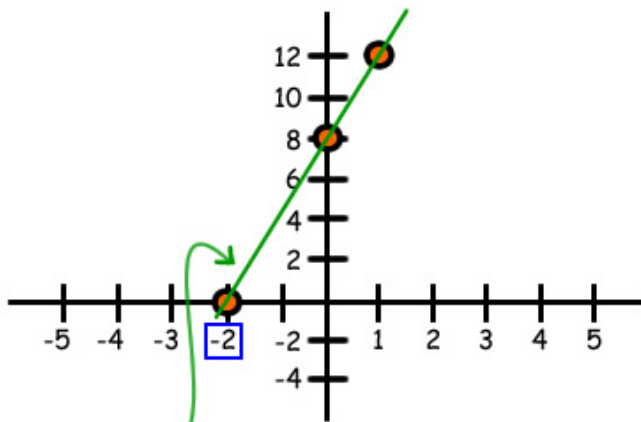


Questions?
Ask a live tutor now!

Ask Question ▶

Find the x intercept of the line
 $y = 4x + 8$.

Question



Answer

$$y = 4x + 8$$

$$0 = 4x + 8$$

$$0 - 8 = 4x + \cancel{8} - \cancel{8}$$

$$4x = -8$$

$$\frac{4x}{4} = \frac{-8}{4}$$

$$x = -2$$

x-intercept is $(-2, 0)$

4. Linear functions

[Intercepts](#)

[Slope](#)

[Direct proportion](#)

[Forms of the line equation](#)

[Slope equation](#)

[Parallel equations](#)

[Perpendicular equations](#)

[Transformations](#)

[Table of Contents](#)

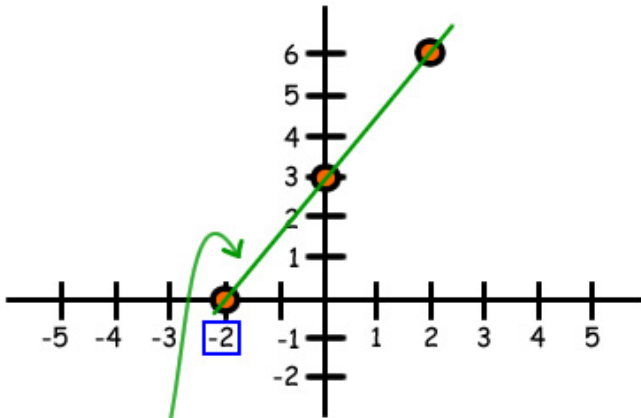


Questions?
Ask a live tutor now!

Ask Question ▶

Find the x intercept of the line
 $2y - 3x = 6$.

Question



Answer

$$2y - 3x = 6$$

$$2(0) - 3x = 6$$

$$0 - 3x = 6$$

$$-3x = 6$$

$$\frac{-3x}{-3} = \frac{6}{-3}$$

$$x = -2$$

x-intercept is $(-2, 0)$

4. Linear functions

[Intercepts](#)

[Slope](#)

[Direct proportion](#)

[Forms of the line equation](#)

[Slope equation](#)

[Parallel equations](#)

[Perpendicular equations](#)

[Transformations](#)

[Table of Contents](#)

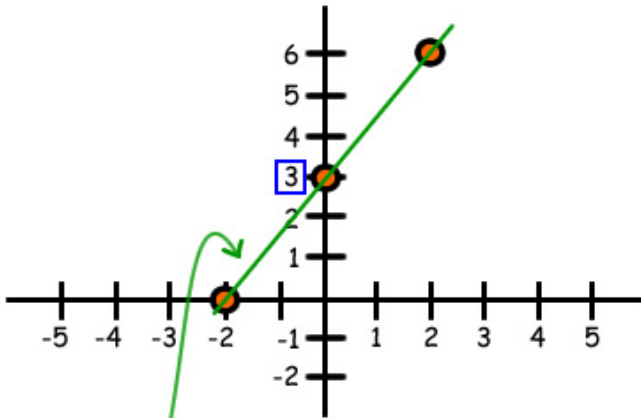


Questions?
Ask a live tutor now!

Ask Question ▶

Find the y intercept of the line
 $2y - 3x = 6$.

Question



Answer

$$2y - 3x = 6$$

$$2y - 3(0) = 6$$

$$2y - 0 = 6$$

$$2y = 6$$

$$\frac{2y}{2} = \frac{6}{2}$$

$$y = 3$$

y-intercept is (0, 3)

4. Linear functions

[Intercepts](#)

[Slope](#)

[Direct proportion](#)

[Forms of the line equation](#)

[Slope equation](#)

[Parallel equations](#)

[Perpendicular equations](#)

[Transformations](#)

[Table of Contents](#)

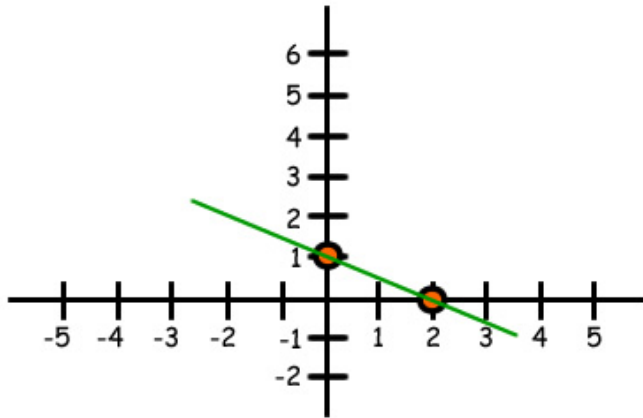


Questions?
Ask a live tutor now!

Ask Question 

Find the line with x intercept
 $x = 2$ and y intercept $y = 1$.

Question



Answer

$$\frac{x}{a} + \frac{y}{b} = 1$$

$$a = 2, b = 1$$

$$\frac{x}{2} + \frac{y}{1} = 1$$

$$\frac{x}{2} + y = 1$$

4. Linear functions

[Intercepts](#)

[Slope](#)

[Direct proportion](#)

[Forms of the line equation](#)

[Slope equation](#)

[Parallel equations](#)

[Perpendicular equations](#)

[Transformations](#)

[Table of Contents](#)